



# GAT MONTHLY MEMBERSHIP PROGRESS REPORT

Results as of: 12/31/2022

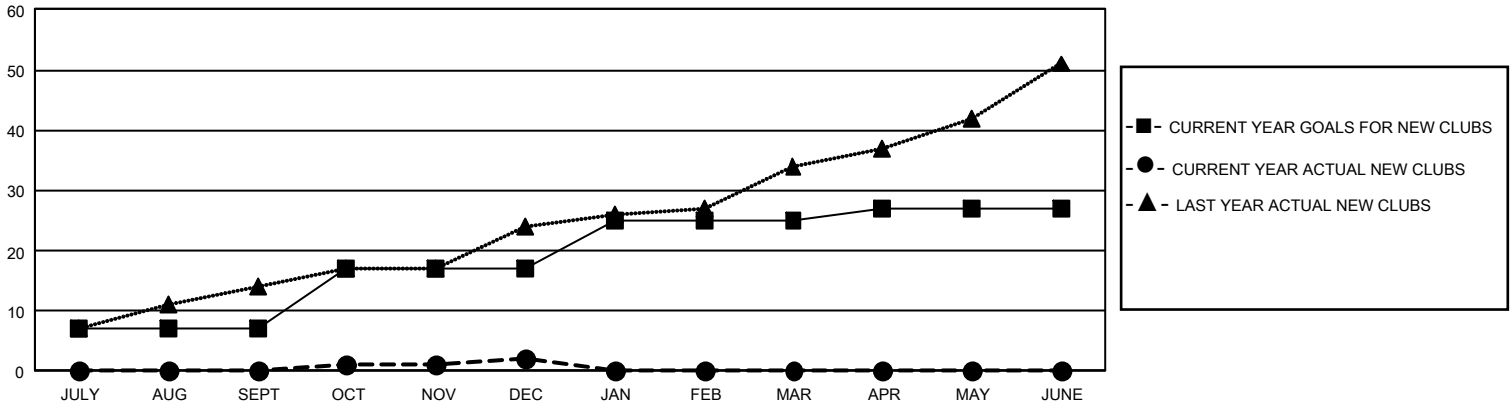
## GMT Constitutional Area 8, Group A

REPORT DOES NOT INCLUDE CLUBS IN UNDISTRICTED AREAS.

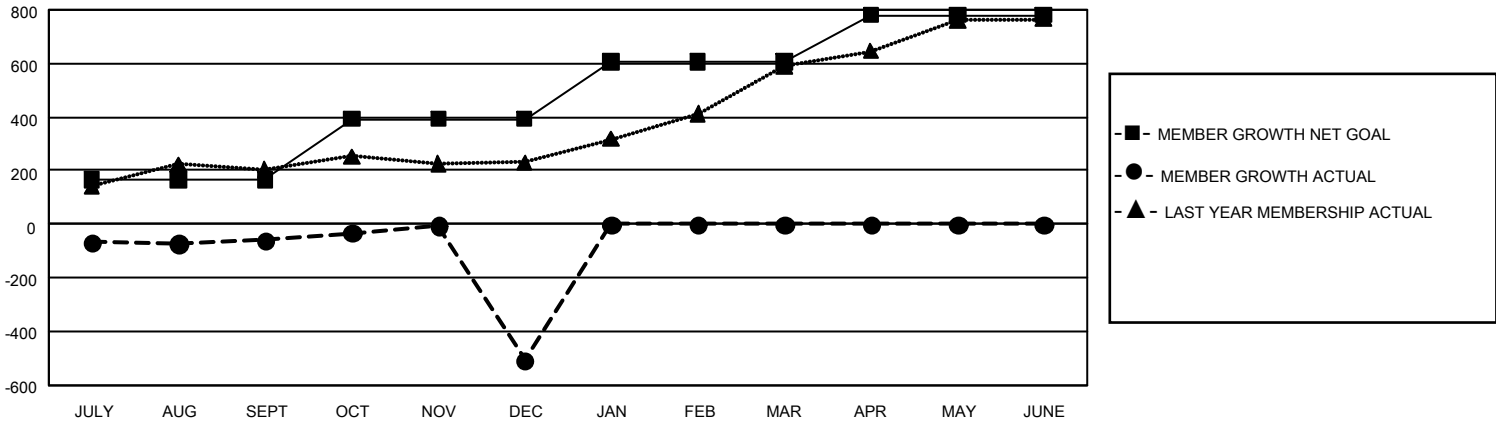
Clubs			
RESULTS FOR 2022-2023			
QUARTER	NEW CLUB GOAL	NEW CLUBS	DROPPED CLUBS
JULY/AUG/SEPT	21	0	2
OCT/NOV/DEC	30	2	15
JAN/FEB/MAR	24	0	0
APR/MAY/JUNE	6	0	0

Members			
RESULTS FOR 2022-2023			
QUARTER	MEMBER GROWTH NET GOAL	MEMBER GROWTH ACTUAL	DROPPED MEMBERS ACTUAL (including transfers)
JULY/AUG/SEPT	167	191	228
OCT/NOV/DEC	225	236	676
JAN/FEB/MAR	215	0	0
APR/MAY/JUNE	174	0	0

GOALS AND ACTUAL NEW CLUBS CUMULATIVE



GOALS AND ACTUAL MEMBERS CUMULATIVE



<b>DROPPED CLUBS: 17</b>	134 CLUBS OF 393 ADDED 1 OR MORE NEW MEMBERS	<b>GENDER DISTRIBUTION</b>	
		MALE 6,115 (70.21%) FEMALE 2,592 (29.76%) NON BINARY 0 (0.00%) PREFER NOT TO ANSWER 2 (0.02%)	
<b>DROPPED MEMBERS</b>		<a href="#">CLICK HERE FOR CUMULATIVE MEMBERSHIP DATA</a>	TOTAL FAMILY UNIT MEMBERS 186
DECEASED 17 CLUB CANCELLED 336 OTHER 551 <b>TOTAL 904</b>			FAMILY MEMBERS PAYING HALF DUES 96